



© Lana Grossa GmbH

Design 26 – Merino Edition 03

MEN'S PULLOVER COOL WOOL

MEN'S PULLOVER · COOL WOOL

Design 26 – Merino Edition 03



Size 48/50 (52/54, 56/58)

Instructions are given for first size. Figures in parenthesis refer to larger sizes. When only one figure is given, it applies to all sizes.

Materials: 750 (800, 850) g of Lana Grossa **Cool Wool** (100% superfine Merino wool; 160 m/50 g) in Steel Blue (col 2037). Size 3.5 and 4 mm needles; short size 3.5 mm circular needle.

Rib patt: K2, p2.

St st: K on RS, p on WS.

Chart patt: Multiple of 11. Numbers at right edge of chart indicate RS rows, numbers at left edge of chart indicate WS rows. WS rows are shown in grey on chart. Rep rows 1 – 6.

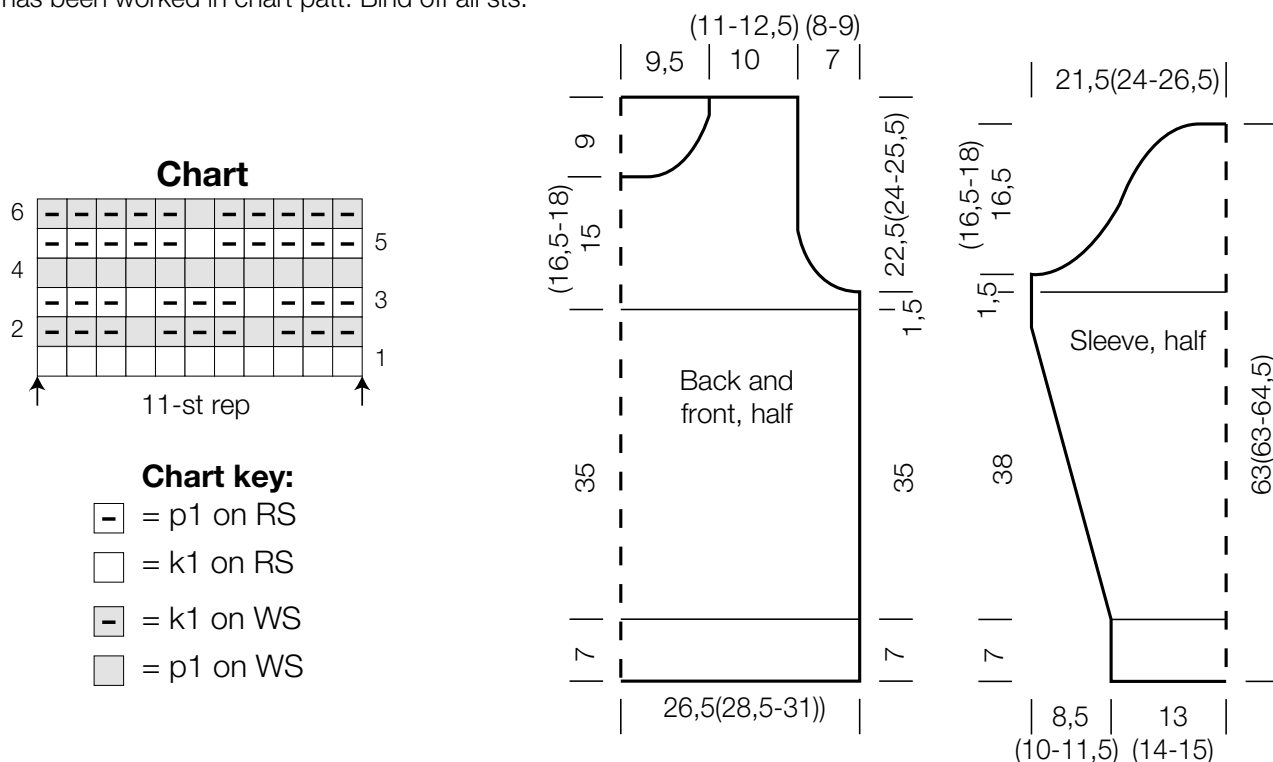
Gauges: On size 4 mm needles: 23 sts and 34 rows = 10 x 10 cm in St st; 23 sts and 40 rows = 10 x 10 cm in chart patt.

Back: With size 3.5 mm needles cast on 122 (134, 142) sts. Next row (WS): Selvage st, p1, * k2, p2; rep from * to last 4 sts, k2, p1, selvage st. Work in rib patt as set by last row until piece meas 7 cm from cast-on, ending with a WS row. Change to size 4 mm needles. Work in St st for 35 cm, increasing 1 (0, 3) st(s) on first row = 123 (134, 145) sts. Next row (RS): Selvage st (not shown on chart); work row 1 of chart = work 11-st patt rep 11 (12, 13) times; selvage st (not shown on chart). Work next 5 rows of chart, ending with a WS row. Cont working chart and shape armholes as foll: Bind off 5 (7, 9) sts at beg of next 2 rows, 4 sts at beg of next 2 rows, 3 sts at beg of next 2 rows, 2 sts at beg of next 2 rows, 1 st at beg of next 4 rows = 91 (98, 105) sts. Work even until a total of 24 (25.5, 27) cm has been worked in chart patt. Bind off all sts.

Front: Work same as back until a total of 15 (16.5, 18) cm has been worked in chart patt, ending with a WS row. Shape neck: Next row (RS): Bind off center 13 (14, 13) sts. Working each side separately, bind off 5 sts at each neck edge 1 time, 4 sts 1 time, 3 sts 1 time, 1 st 2 times and when same length as back to shoulders, bind off rem 25 (28, 32) sts for each shoulder.

Sleeves: With size 4.5 needles cast on 62 (66, 70) sts. Work in rib patt same as for back until piece meas 7 cm from cast-on, ending with a WS row. Change to size 4 mm needles. Work in St st for 4 rows, increasing 1 (2, 1) st(s) on first row = 63 (68, 71) sts. Shape sleeve: Inc 1 st at each end of next RS row, then every 6th row 18 times (then every 6th row 15 times, then every 4th row 6 times / then every 6th row 9 times, then every 4th row 16 times) = 101 (112, 123) sts. Work even until piece meas 38 cm from end of rib patt, ending with a WS row. Next row (RS): Selvage st (not shown on chart); work row 1 of chart = work 11-st patt rep 9 (10, 11) times; selvage st (not shown on chart). Work next 5 rows of chart, ending with a WS row. Cont working chart and shape sleeve cap as foll: Bind off 5 (7, 9) sts at beg of next 2 rows, 4 sts at beg of next 2 rows, 3 sts at beg of next 2 rows, 2 sts at beg of next 2 rows, 1 st at beg of next 6 (6, 8) rows, [work 2 rows even, bind off 1 st at beg of next 2 rows] 10 (10, 11) times, then bind off 1 st at beg of next 6 rows, 3 sts at beg of next 2 rows, 5 sts at beg of next 2 rows. Bind off rem 25 (32, 35) sts.

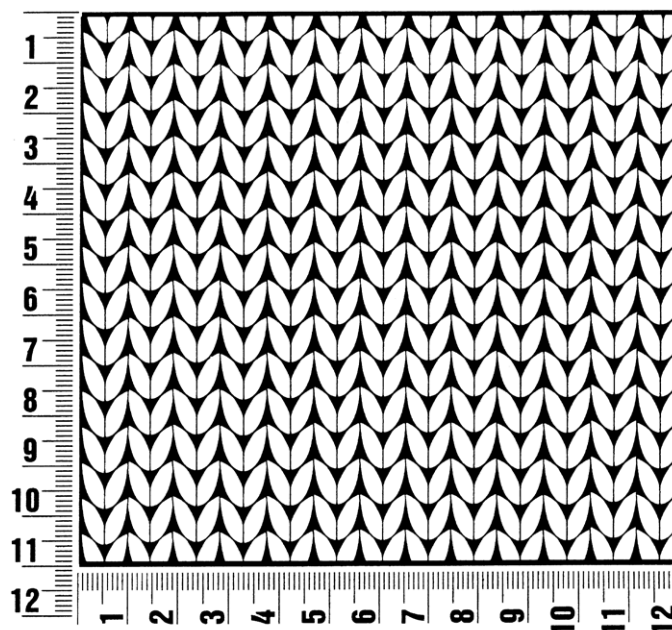
Finishing: Pin pieces to measurements and block. Sew shoulder seams. **Neckband:** With circular needle, pick up and k 116 sts evenly around neck edge. Place beg of rnd marker and join for working in rnds. Work in rib patt for 5 – 6 cm. Loosely bind off all sts. Fold band in half to WS and sew down. Sew in sleeves. Sew side and sleeve seams.



Gauge Swatch

Before you begin ...

...make a gauge swatch. Use the recommended needles, yarns and pattern stitch for your gauge swatch. It should measure approx. 12 cm x 12 cm. Cast-on and bind-off rows, as well as selvage stitches should not be included in the measurement. Pin your swatch and block it as you would the finished pieces of the garment. Count stitches and rows over 10 cm. If your gauge swatch is too small, switch to larger needles. If your gauge swatch is too big, switch to smaller needles.



Abbreviations

beg = begin(ning) · **ch** = chain · **cont** = continue · **dec** = decreas(e)(ing) · **inc** = increas(e)(ing) · **k** = knit · **kwise** = as if to knit
meas = measures · **M1L** = lift strand between sts from front to back and knit this strand through the back loop · **M1R** = lift strand between sts from the back and knit this strand through the front loop · **patt** = pattern · **pm** = place marker · **p** = purl
pwise = as if to purl · **rem** = remain(ing) · **rep** = repeat(s) · **rev St st** = reverse stockinette stitch · **rnd(s)** = round(s) · **RS** = right side · **sc** = single crochet · **skp** = slip 1 stitch as if to knit, knit 1 stitch, pass slipped stitch over knitted stitch · **sk2p** = slip 1 stitch as if to knit, knit 2 together, pass slipped stitch over knitted stitch · **s2kp** = slip 2 stitches as if to knit, k 1 stitch, pass slipped stitches over knitted stitch · **sl** = slip · **st(s)** = stitch(es) · **St st** = stockinette stitch · **tbl** = through the back loop · **tog** = together · **wyib** = with yarn in back of work · **wyif** = with yarn in front of work · **WS** = wrong side · **yo(s)** = yarn over(s)

Publisher's Info

Publisher: Lana Grossa GmbH, Gaimersheim, www.lana-grossa.com

Photographer: Nicolas Olonetzky, www.olonetzky.com