



Styling + accessories by **MESSAGE**

**1810**

## 1810 - Long-sleeved shirt with eyelet pattern in Mayflower Super Kid Silk.

<b>Size:</b>	XXS	(XS)	S	(M)	L	(XL)	XXL	(XXXL)
<b>Chest measurement in cm:</b>	88	(98)	108	(118)	128	(138)	148	(158)
<b>Length in cm:</b>	56	(58)	60	(62)	64	(66)	68	(70)
<b>Color 63, Warm Olive, balls:</b>	7	(7)	8	(8)	8	(9)	9	(10)
<b>Needles:</b>	US 8/UK 6							
<b>Circular needles (40 cm):</b>	US 8/UK 6							
<b>Quality:</b>	Mayflower Super Kid Silk. 76 % Kid Mohair, 24 % Silk, 195 m pr. 25 gram.							
<b>Gauge:</b>	Horizontal: 16 sts x 23 rows = 10 x 10 cm in stockinette.							

To achieve the best result, we recommend using Knit Pro needles, which is the professional tool for knitting and crochet.

It is a good idea to read through the pattern before starting the work, and we also recommend making a swatch and wet blocking it. Be aware that the eyelet pattern is wider than stockinette.

The pattern is knitted on every right-side row, and all wrong-side rows are purled. The pattern is counted out from the middle (see the diagram)

The shirt is knitted in double Kid Silk.

With the sizes, which have an uneven amount off balls, use both end of the balls.

### Procedure.

#### Back.

**1:** On needles US 8/UK 6 and with double yarn cast on 46(54) 64(72)82(90)100(108) sts.

**2:** Knit 10(10)10(12)12(12)14(14) cm ribbing (knit 1, purl 1).

**3:** Then knit pattern following the diagram while on every 6th row increasing 1 sts in each side. The increase starts right after the ribbing edge and is done a total of 5(5)5(6)6(6)7 (7) times.

**4:** Then cast on 2 sts at the beginning of every row a total off 12(13)14(15)16(17)18(19) times. Then cast on 10 sts at the beginning of every row a total of 1(1)2(2)3(3)4(4) times.

**5:** Work straight until the entire work measures 53(55)57(59) 61(63)65(67) cm. Fasten off the middle 22(26)26(30) 30(34)34(38) sts for the neck and finish each side apart. Fasten off 1x3 sts towards the neck side and fasten off the rest of the sts for the shoulder- and sleeve hem. Applies to all sizes.

**6:** Knit the other side the same way.

#### Front.

**1:** Knit like on the back until the entire front piece measures 49(51)53(55)57(59)61(63) cm.

**2:** Fasten off the middle

18(22)22(26)26(30)30(34) sts for the neck and finish each side apart.

**3:** Fasten off 1x3 and 1x2 sts towards the neck side and fasten off the remaining sts for the shoulder- and sleeve hem.

**4:** Knit the other side the same way. Applies to all sizes.

#### Assembly.

**1:** Sew together over the shoulders and down to the bottom edge of the sleeve.

**2:** Knit 32(34)36(38)40(42)44(46) sts up in the sleeve edge and knit 6(6)8(8)8(10)10(10) cm stockinette. Fasten off loosely and knit the other sleeve edge the same way.

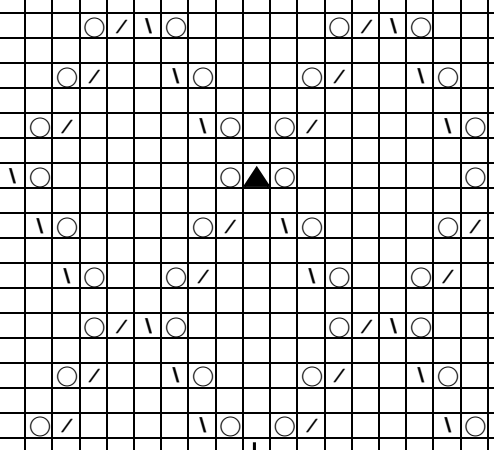
**3:** Knit 86(92)98(104)110(116)124(130) sts up all around the neck and knit 6(6)8(8)8(10) 10(10) cm stockinette. Fasten off loosely.

**4:** Fold and sew the neckband to the wrong side.

**5:** Sew the bottom sleeve hem and further down in the side.

**6:** Fold and sew the sleeve edges to the wrong side.

**7:** Weave in the ends and wet block the shirt.



The middle

- = yarn ove
- \ = Knit 2 together
- / = knit 2 togethe
- ▲ = Slip 1, knit 2 together, pull the slipped sts over